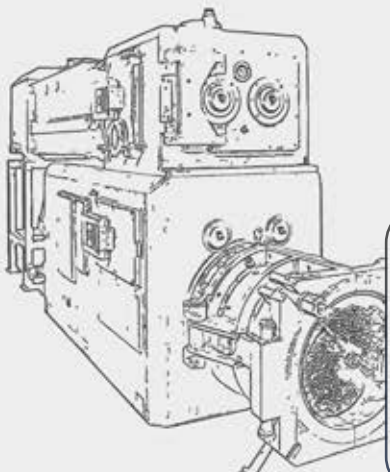




Rely on the best partner!



**SECOND-HAND  
RECONDITIONED  
MACHINES**

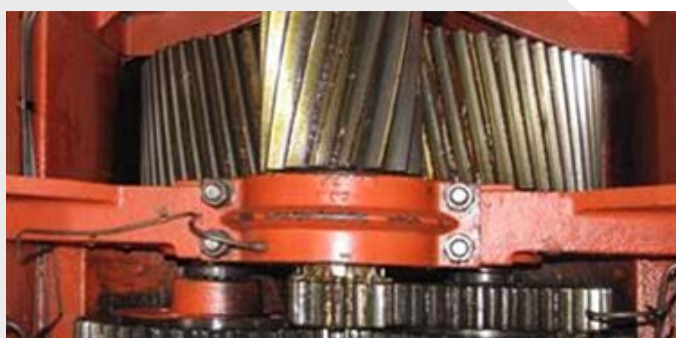
[www.sabo.gr](http://www.sabo.gr)

## SECOND-HAND RECONDITIONED MACHINES

List of available machines at our premises

• EXTRUDER BONGIOANNI 29 MEV .....	3
• EXTRUDER MORANDO MVC 475 (Modified to 550) .....	4
• EXTRUDER MORANDO UNIVERSAL 450 SUPER (Monobloc) .....	5
• EXTRUDER HANDLE PZ35b (with vertical mixer) .....	6
• EXTRUDER RIETER VWDM 2308 SP500/500 .....	7
• EXTRUDER VERDES 055/30 (for split tiles) .....	8
• ROLLER MILL BEDESCHI L-10X6.5 (double motor) .....	9
• ROLLER MILL BONGIOANNI 7LR (single motor) .....	10
• ROLLER MILL BONGIOANNI 6LR .....	11
• STONE SEPARATOR SABO SB DL-512 (New Machine) .....	12
• MIXER BONGIOANNI 180 ISO .....	13
• VERTICAL MIXER .....	14
• CLAY CRUSHER HANDLE WM 30A .....	15
• CLAY CRUSHER MORANDO RA.5 SER.-B .....	16
• EXCAVATOR BEDESCHI BEL C-40/11 .....	17
• PRESS for TILES MORANDO S8F .....	18
• PRESS for TILES BONGIOANNI 11PV .....	19
• PRESS for TILES BONGIOANNI 13PV .....	20
• PRESS for TILES BONGIOANNI 16PV .....	21
• VACUUM PUMP OCS 4/5,5 VFA (New) .....	22
• VACUUM PUMP Small 3,6 kW (oil) .....	23
• VACUUM PUMP 11/12,5 kW (oil) .....	24

# EXTRUDER BONGIOANNI 29 MEV



Technical characteristics

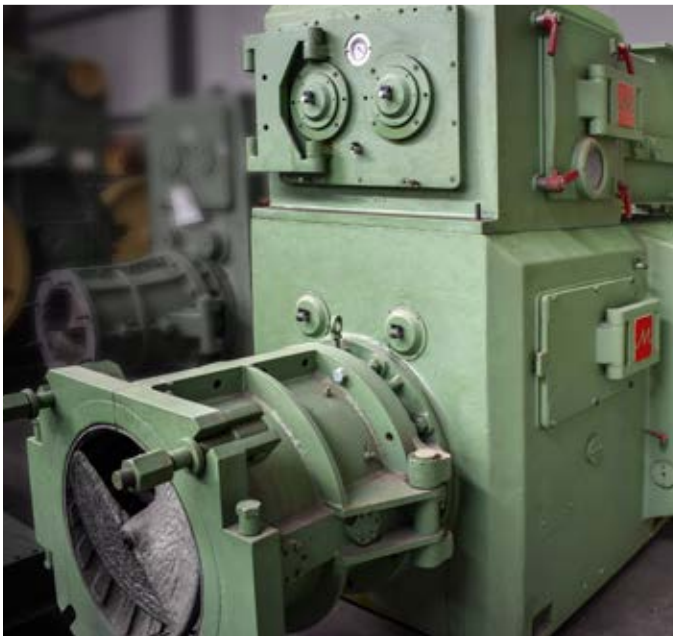
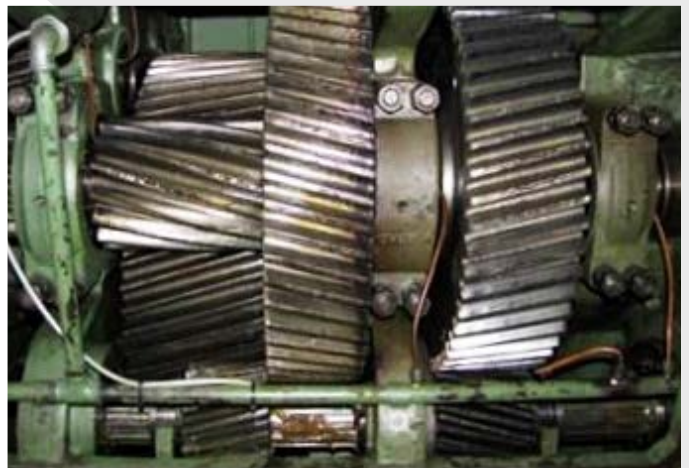
Ø550mm x 500mm

CAPACITY RATE: 35m<sup>3</sup>/h wet

POWER: 132kW + 45kW



# **EXTRUDER MORANDO MVC 475 (Modified to 550mm)**



Technical characteristics

**Ø550mm x 475mm (Modified to 550mm x 550mm)**

**CAPACITY RATE: 40 tons/h**

**POWER: 132kW + 45kW**

# EXTRUDER MORANDO UNIVERSAL 450 SUPER (Monobloc)



Technical characteristics

Ø550mm x 450mm

CAPACITY RATE: 30 tons/h

POWER: 132kW



# EXTRUDER HANDLE PZ35B (with vertical mixer)



Technical characteristics

Ø350mm x 350mm

CAPACITY RATE: 8 m<sup>3</sup>/h

POWER: 75kW/30 bar

2 extrusion bodies (as in pictures)

# EXTRUDER RIETER VWDM 2308 SP500/500



Technical characteristics

Ø600mm x 560mm

CAPACITY RATE: 40 tons/h

POWER: 174kW + 98kW

*Including Electric control, 2 DC motors, and spares*



# EXTRUDER VERDES 055/30 (for split tiles)



Technical characteristics

**Ø340mm x 340mm**

**CAPACITY RATE: 3-4 m<sup>3</sup>/h**

**POWER: 37kW**

*Note: the machine was never used*



## **ROLLER MILL BEDESCHI L-10x6.5 (double motor)**



Technical characteristics

**Ø1000mm x 650mm**

**CAPACITY RATE: 18-50 m<sup>3</sup>/h**

**POWER: 55kW + 37,5kW**

# **ROLLER MILL BONGIOANNI 7LR (1000x700 - single motor)**

*2 pieces*



Technical characteristics

**Ø1000mm x 700mm**

**CAPACITY RATE: 20m<sup>3</sup>/h**

**POWER: 55kW**



# **ROLLER MILL BONGIOANNI 6LR (850x600)**



Technical characteristics

**Ø850mm x 600mm**

**CAPACITY RATE: 45m<sup>3</sup>/h**

**POWER: 45kW or 60kW**

# STONE SEPARATOR SABO SB DL-512

*2 NEW pieces*



Technical characteristics

**Ø500mm x 1200mm**

**Power: 22kW + 30kW**

***Note: the machines are new***



## MIXER BONGIOANNI 180 ISO (modified without screen)



Technical characteristics

**CAPACITY RATE: 40-50 m<sup>3</sup>/h**

**POWER: 45 kW (to work without a screen)**

**Note: To work as a regular double shaft mixer**

# VERTICAL MIXER



Technical characteristics

**CAPACITY RATE: -**

**POWER: -**

**Note: -**



# CLAY CRUSHER HANDLE WM 30A



Technical characteristics

Ø1200mm x 300mm

CAPACITY RATE: 40 m<sup>3</sup>/h

POWER: 45kW

# CLAY CRUSHER MORANDO RA.5 SERIE B



Technical characteristics

Ø535mm x 512mm  
CAPACITY RATE: 20m<sup>3</sup>/h  
POWER: 22kW



# EXCAVATOR BEDESCHI BEL C-40/11



Technical characteristics

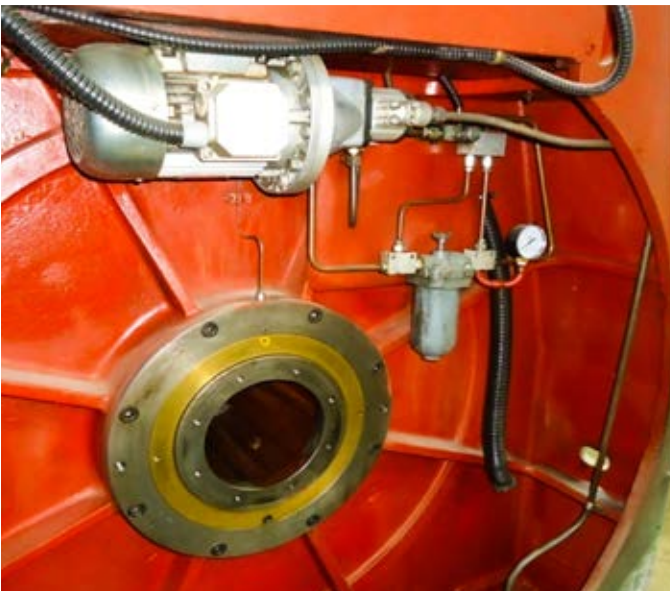
**40/11**

**BOOM 1mt**

**BUCKET 40lt**

# PRESS FOR TILES MORANDO S8F (720X450)

*2 pieces*



Technical characteristics

**720mmX450mm**

**CAPACITY RATE: 1500 tiles/h**

**POWER: 5,5kW/DRUM**



# PRESS FOR TILES BONGIOANNI 11PV



Technical characteristics

**606mm x 796mm**

**CAPACITY RATE: 1500 tiles/h**

**POWER: 18,5kW**

# PRESS FOR TILES BONGIOANNI 13PV



Technical characteristics

**606mm x 1096mm**

**CAPACITY RATE: 3000 tiles/h**

**POWER: 30kW**



# PRESS FOR TILES BONGIOANNI 16PV



Technical characteristics

**646mm x 1500mm**

**CAPACITY RATE: 4000 tiles/h**

**POWER 45kW**

# VACUUM PUMP OCS 4/5,5 VFA (new)



Technical characteristics

**CAPACITY RATE: 5,5m<sup>3</sup>/h**

**POWER: 5,5 kW**

***Note: the machine is new***



## VACUUM PUMP small 3,6 kW (oil)



Technical characteristics

**CAPACITY RATE:**

**POWER: 3,6 kW**

*Working with oil*

# VACUUM PUMP 11/12,5 kW (oil)



Technical characteristics

**CAPACITY RATE: 1,6 m<sup>3</sup>/h**

**POWER: 11/12.5 kW**

*Working with oil*



Rely on the best partner!



**SECOND-HAND  
RECONDITIONED  
MACHINES**

34002 Vassiliko - Chalkida | Evia - Greece  
T. +30 22210 51805 - 9 | e-mail: sb\_sales@sabo.gr

[www.sabo.gr](http://www.sabo.gr)